

Business Attraction

BY INDUSTRY SECTOR NAICS CODE



Hamilton County
DEVELOPMENT AUTHORITY



HAMILTON COUNTY, FLORIDA



Current Population

13,265

Median Household Income

\$44,338



Employed Residents

3,517

Unemployment Rate

4.4%

**Data derived from US Census Bureau.*

SITE METRICS

Site ID: **12047-012**

Total Acres: **45.6**

Buildable Acres: **37.8**

Highest and Best Land Use Intensity:

- **Primary: Distribution Freight & Logistics**
- **Secondary: General Agribusiness**

45-Minute Drive Time Available Labor Force by Target Industry Occupational Category



TOTAL LABOR FORCE—79,483



CONSTRUCTION—6,319



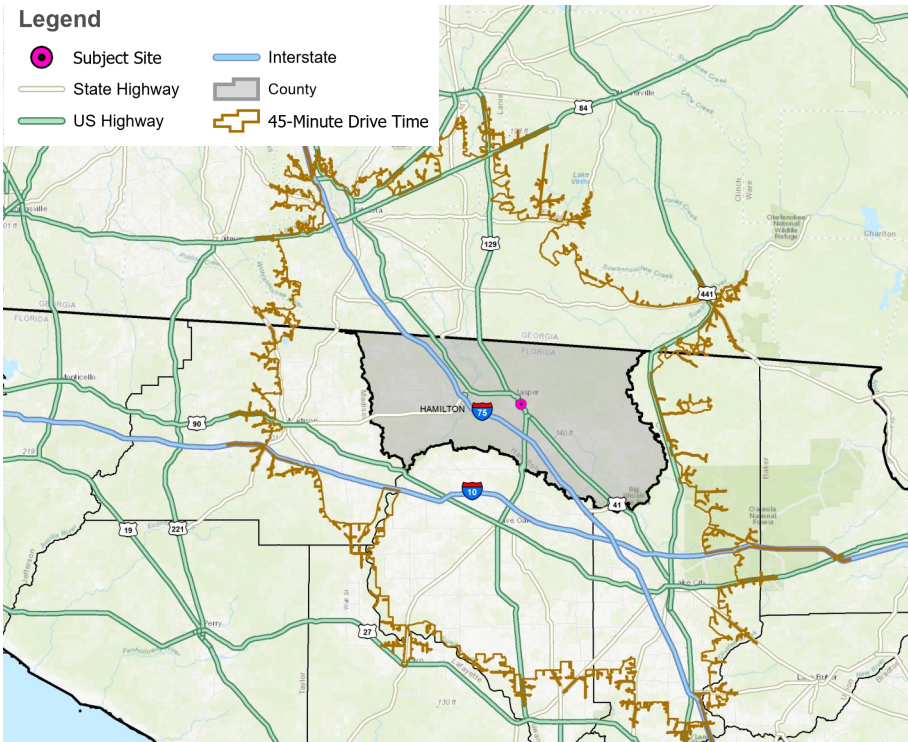
MANUFACTURING—6,264



TRANSPORTATION/WAREHOUSING—4,012

Legend

- Subject Site
- Interstate
- State Highway
- US Highway
- County
- 45-Minute Drive Time



State and regional economic development partners:



SSI Program developed by:



Business Attraction *BY INDUSTRY SECTOR NAICS CODES*

HAMILTON COUNTY, FLORIDA



Top County Employers

1. Nutrien-White Springs Ag Chem
2. Hamilton Correctional Facility
3. Hamilton County School District
4. Suwannee Valley Nursing
5. Hamilton County BCC



County Target Industries

- ⇒ Agribusiness
- ⇒ Manufacturing
- ⇒ Transportation
- ⇒ Warehousing

**Data provided by Hamilton County officials.*

BUSINESS ATTRACTION BY NAICS CODES

TRANSPORTATION/WAREHOUSING

2-Digit NAICS: **48-49**



4-Digit NAICS:

4931—Warehousing and Storage

Companies in this industry operate facilities to store goods and may provide logistics services.

4885—Freight Transportation Arrangement

Companies in this industry provide freight forwarding and customs brokerage services.

4841—General Freight Trucking

Companies in this industry provide long-distance and local trucking, including truckload (TL) and less-than-truckload (LTL) services.

MANUFACTURING

2-Digit NAICS: **31-33**



4-Digit NAICS:

3119—Other Food Manufacturing

Companies in this industry are primarily engaged in manufacturing food (except animal food; grain and oilseed milling; sugar and confectionery products; preserved fruits, vegetables, and specialty foods; dairy products; meat products; seafood products; and bakery products and tortillas).

3219—Other Wood Product Manufacturing

Companies in this industry manufacture wood products (except establishments operating sawmills and wood preservation facilities; and establishments manufacturing veneer, plywood, or engineered wood products).

State and regional economic development partners:

SSI Program developed by: