

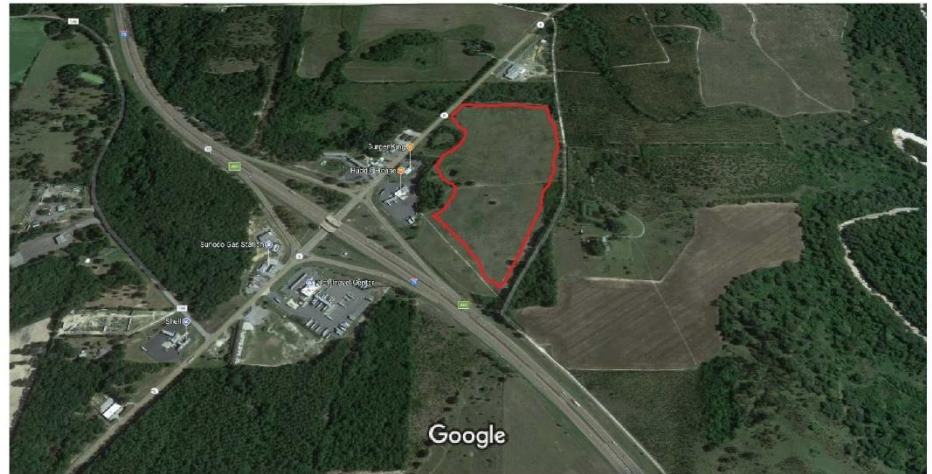


LOGISTICS PARK AT I-75

This 58-acre site is perfectly positioned for a company that wants access and visibility to I-75.

Property Details:

- Ownership: HCDA (public)
- Address: I-75/SR 6
- City: Jennings; County: Hamilton; Zip: 32053
- Type of Space: Vacant Land
- Maximum Size: 58 acres.
Nearby private parcels could be obtained for additional acreage.
- Zoning: Commercial, Highway Intensive



Overview:

- Logistical Park at I-75/SR 6 with 58 acres for development with I-75 Frontage.
- Property at I-75 and State Highway 6
- Water and sewer available
- Interstate visibility and access

Access to Market:

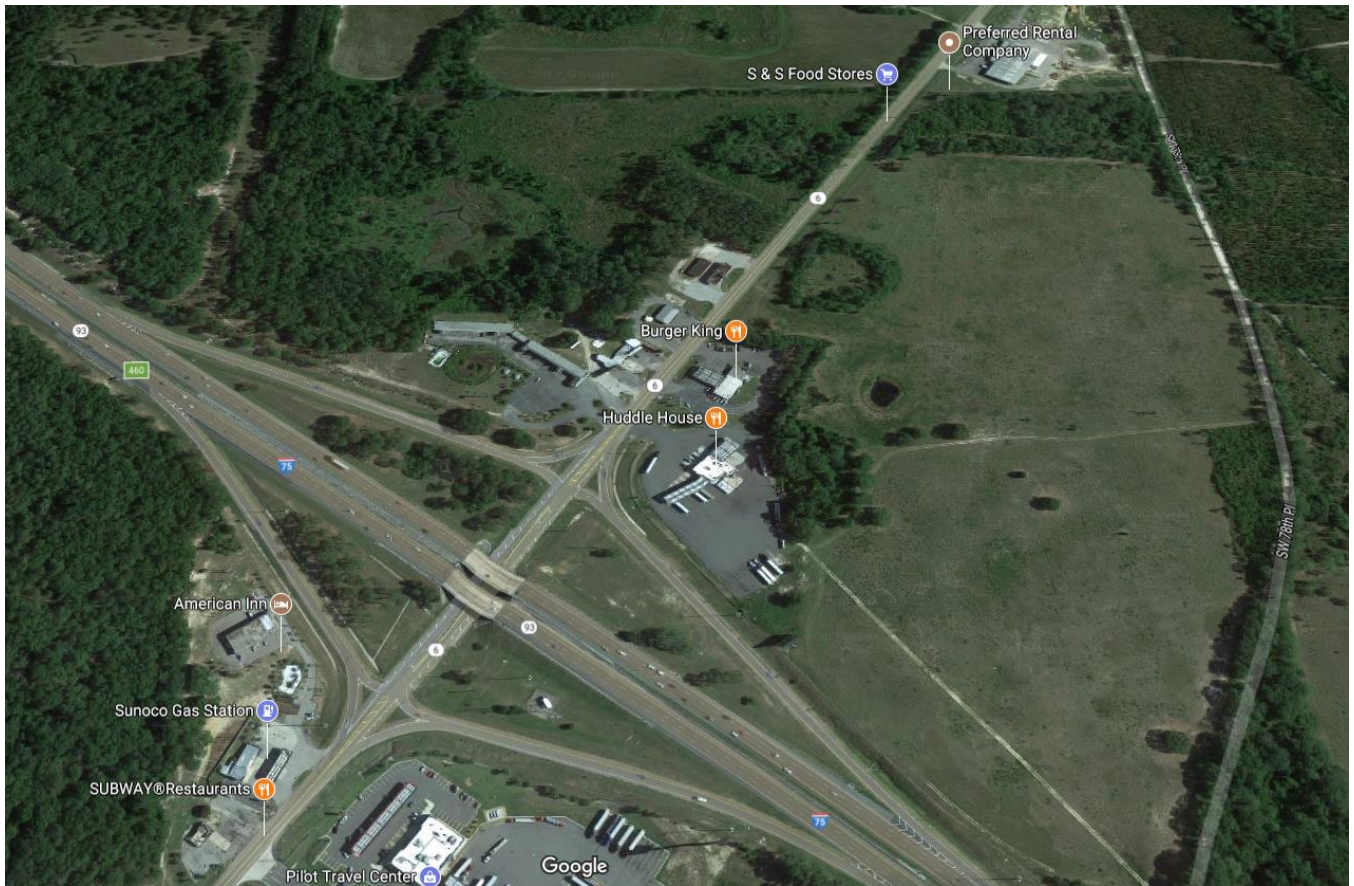
Immediate proximity to I-75 and SR 6

Type	Available
Strategic Intermodal System (SIS)	I-75
SIS Railroads	CSX
SIS Airports	Jacksonville International Airport (JIA)
Seaports	JAXPORT
Non SIS State Highways	US 41, US 129, SR 6, SR 25, SR 136, SR 143
General Aviation Airports	Lake City Gateway Airport (KLCQ) – 39 miles

Possible Target Industries:

- Warehousing & Distribution, Manufacturing, Agriculture

LARGE PROPERTY MAP:



STREET VIEW

