

Business Attraction

BY INDUSTRY SECTOR NAICS CODE



Hamilton County
DEVELOPMENT AUTHORITY



SITE METRICS

Site ID: **12047-016**

Total Acres: **103.8**

Buildable Acres: **90.0**

Highest and Best Land Use Intensity:

- **Primary: Light Industrial**
- **Secondary: Heavy Agribusiness**

HAMILTON COUNTY, FLORIDA



Current Population

14,428

Median Household Income

\$38,569



Employed Residents

4,340

Unemployment Rate

5.4%

**Data provided by Hamilton County officials.*

45-Minute Drive Time Available Labor Force by Target Industry Occupational Category



TOTAL LABOR FORCE—96,118



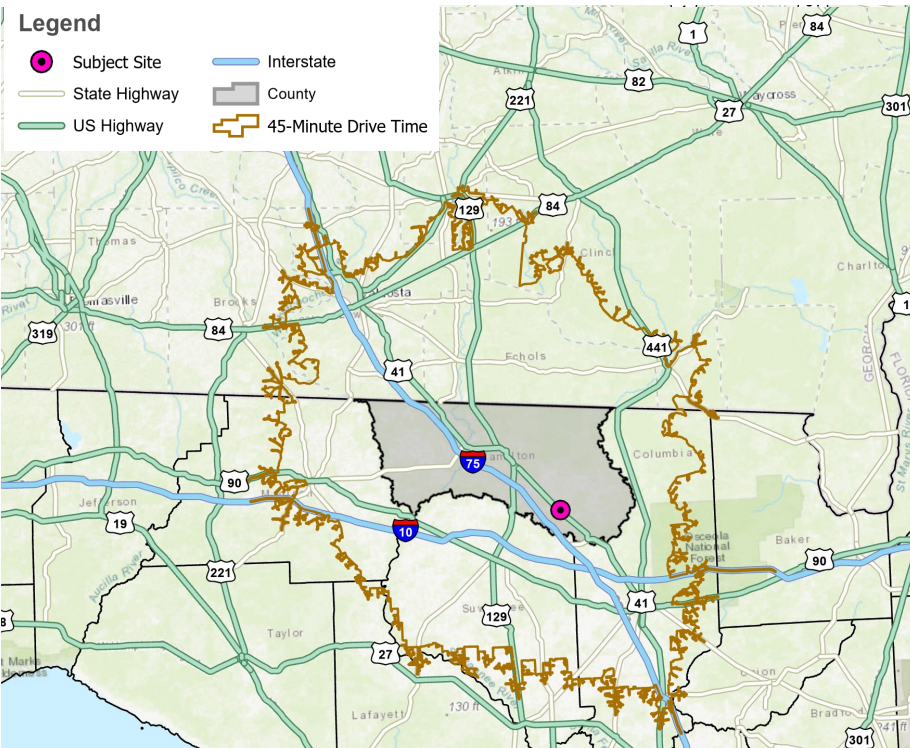
CONSTRUCTION—6,334



MANUFACTURING—6,634



TRANSPORTATION/WAREHOUSING—4,841



State and regional economic development partners:



SSI Program developed by:



Business Attraction *BY INDUSTRY SECTOR NAICS CODES*

HAMILTON COUNTY, FLORIDA



Top County Employers

1. **Nutrien—White Springs Agricultural Chemical**
2. **Hamilton Correctional Facility**
3. **Hamilton County School District**
4. **Suwannee Valley Nursing**
5. **Hamilton County BCC**



County Target Industries

- ⇒ **Agribusiness**
- ⇒ **Manufacturing**
- ⇒ **Transportation**
- ⇒ **Warehousing**

**Data provided by Hamilton County officials.*

BUSINESS ATTRACTION BY NAICS CODES

TRANSPORTATION/WAREHOUSING

2-Digit NAICS: 48-49



4-Digit NAICS:

4841—General Freight Trucking

Companies in this industry provide long-distance and local trucking, including truckload (TL) and less-than-truckload (LTL) services.

4885—Freight Transportation Arrangement

Companies in this industry provide freight forwarding and customs brokerage services.

4889—Other Support Activities for Transportation

Companies in this industry provide support activities to transportation (except for air transportation; rail transportation; water transportation; road transportation; freight transportation arrangement; and packing and crating).

TRANSPORTATION/WAREHOUSING, CONT.

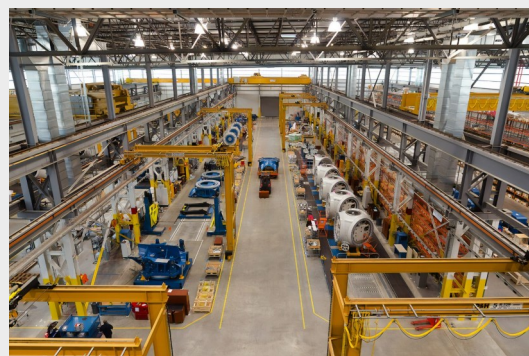
4-Digit NAICS:

4931—Warehousing and Storage

Companies in this industry operate facilities to store goods and may provide logistics services.

MANUFACTURING

2-Digit NAICS: 31-33



4-Digit NAICS:

3222—Converted Paper Product Manufacturing

Companies in this industry make paper and converted paper products, including paperboard, corrugated and paperboard containers, coated papers, and paper bags.

State and regional economic development partners:



SSI Program developed by:

