

Business Attraction

BY INDUSTRY SECTOR NAICS CODE



Hamilton County
DEVELOPMENT AUTHORITY



HAMILTON COUNTY, FLORIDA



Current Population

14,428

Median Household Income

\$38,569



Employed Residents

4,340

Unemployment Rate

5.4%

**Data provided by Hamilton County officials.*

SITE METRICS

Site ID: **12047-006**

Total Acres: **58.2**

Buildable Acres: **42.3**

Highest and Best Land Use Intensity:

- **Primary: Distribution Freight/Logistics**
- **Secondary: Business Park**

45-Minute Drive Time Available Labor Force by Target Industry Occupational Category



TOTAL LABOR FORCE—96,118



CONSTRUCTION—6,334



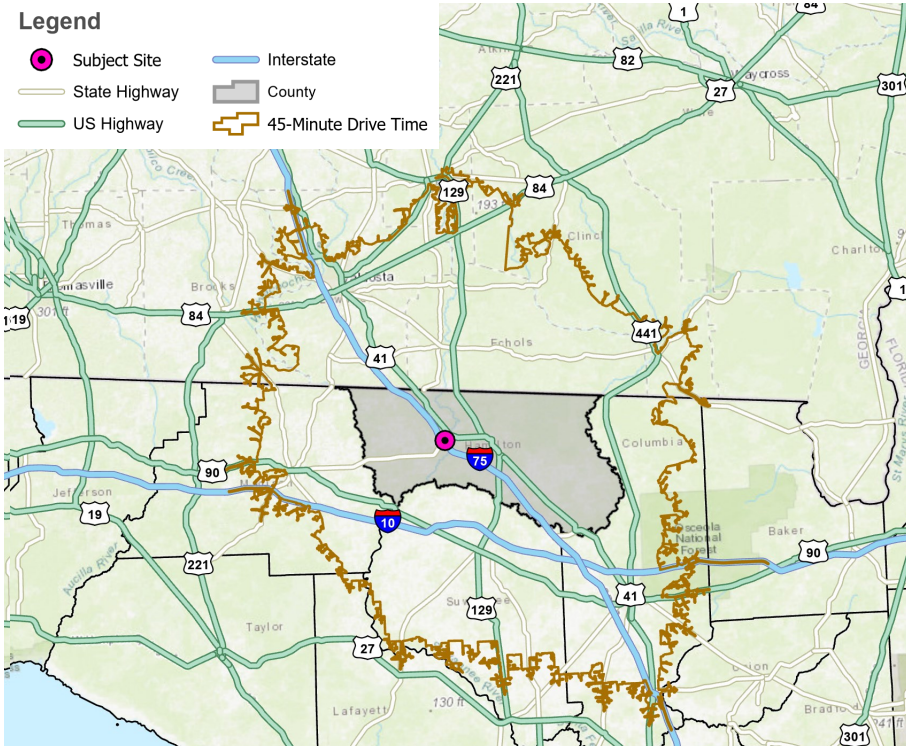
MANUFACTURING—6,634



TRANSPORTATION/WAREHOUSING—4,841

Legend

- Subject Site
- Interstate
- State Highway
- US Highway
- County
- 45-Minute Drive Time



State and regional economic development partners:



SSI Program developed by:



Business Attraction *BY INDUSTRY SECTOR NAICS CODES*

HAMILTON COUNTY, FLORIDA



Top County Employers

1. **Nutrien—White Springs Agricultural Chemical**
2. **Hamilton Correctional Facility**
3. **Hamilton County School District**
4. **Suwannee Valley Nursing**
5. **Hamilton County BCC**



County Target Industries

- ⇒ **Agribusiness**
- ⇒ **Manufacturing**
- ⇒ **Transportation**
- ⇒ **Warehousing**

**Data provided by Hamilton County officials.*

BUSINESS ATTRACTION BY NAICS CODES

TRANSPORTATION/WAREHOUSING

2-Digit NAICS: 48-49



4-Digit NAICS:

4841—General Freight Trucking

Companies in this industry provide long-distance and local trucking, including truckload (TL) and less-than-truckload (LTL) services.

4885—Freight Transportation Arrangement

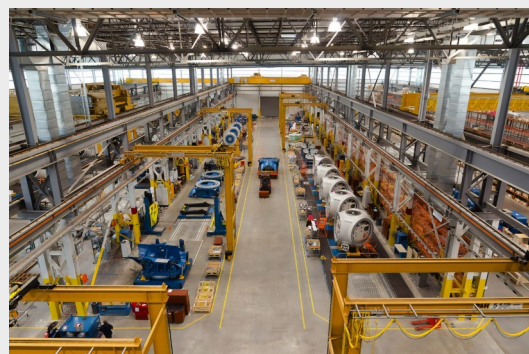
Companies in this industry provide freight forwarding and customs brokerage services.

4889—Other Support Activities for Transportation

Companies in this industry provide support activities to transportation (except for air transportation; rail transportation; water transportation; road transportation; freight transportation arrangement; and packing and crating).

MANUFACTURING

2-Digit NAICS: 31-33



4-Digit NAICS:

3219—Other Wood Product Manufacturing

Companies in this industry are primarily engaged in manufacturing wood products (except establishments operating sawmills and wood preservation facilities or manufacturing veneer, plywood, or engineered wood products)

3222—Converted Paper Product Manufacturing

Companies in this industry make paper and converted paper products, including paperboard, corrugated and paperboard containers, coated papers, and paper bags.

State and regional economic development partners:



SSI Program developed by:

